



NLA ASSOCIATE MEMBER FEATURE “IN THE LIMELIGHT” WITH TRINITY CONSULTANTS

NLA is back with another edition of our “In the Limelight” series. This time, we are featuring our associate member, Trinity Consultants.



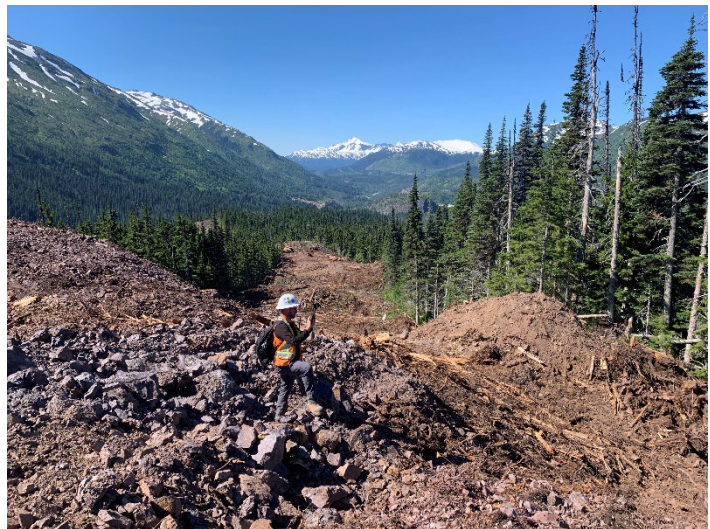
Headquartered in Dallas, Texas, Trinity Consultants, a leading global environmental consulting firm, provides services and solutions in the Environmental Health and Safety Regulatory Compliance (including air, chemical, water, waste, and other solutions), Building Technology and Sustainability, Life Sciences (including engineering, pharmaceutical toxicology, industrial hygiene, and more), and Ecology and Water markets (including marine services, wastewater solutions, landscape architecture and more). Founded in 1974, Trinity has technical expertise, industry depth, and capabilities to help clients achieve their goals in natural and built environments. Since its founding, Trinity has grown to have 2,000+ employees and 120 offices worldwide.

Trinity has been a proud Associate Member of the National Lime Association for nearly 25 years. Mike Remsberg, Divisional President at Trinity, said, “We have enjoyed supporting producer members who meet various environmental and sustainability challenges in the US and Canada and hope to do so for decades to come.” Trinity Consultants has an equally long history supporting lime plants with regulatory compliance and environmental management needs. The company is involved with NLA’s environmental committee, and many of our projects support the Lime MACT effort. You can read more about [Lime Manufacturer Environmental Risk Reduction and Growth Focus](#) and their work with Lime on their [Lime page](#).

Susan Barnes, who works closely with NLA, joined Trinity Consultants in 2010. Susan is now a Principal Consultant in Trinity’s Washington, DC, office and a member of NLA’s

Environmental and Sustainability Committees. Susan assisted NLA with reviewing and commenting on the Lime Maximum Achievable Control Technology (MACT) effort. Susan has also worked with various NLA members, permitting new kilns, preparing compliance, emissions, Greenhouse Gas, and Toxic Release Inventory reports, and preparing MACT Operations and Maintenance Plans. “The NLA team has been a pleasure to work with over the years and does a superior job representing the industry. I can personally attest that with Jon De’Ath amid the Lime MACT emissions data war room, no nanogram of D/F was left unturned in seeking the best outcome for the producer members,” said Barnes.

Trinity has emphasized sustainability in their core practices and has worked extensively with the steel industry over the years, including Nucor. As part of their Life Cycle Assessment/ Environmental Product Declaration (which transparently reports the environmental impact of a product or material throughout its lifecycle) and decarbonization services, Trinity has supported Nucor’s efforts in recent years to help them assess their operations and supply chains. Read more about this initiative [here](#). Trinity also supports the mining industry in their [Water and Ecology Division](#), which is relatively new in their 50-year history.



You can read more about Trinity’s [Sustainability Maturity Curve](#), [Sustainability Campaign](#), [Sustainability Research Report](#), [Decarbonization Strategy Development](#), [Sustainability Program Support and ESG Disclosure](#), and [Environmental Sustainability Metrics](#) on their website, trinityconsultants.com.

Beyond sustainability, this consulting group also sets itself apart in its employee safety and helps its clients improve safety compliance. Trinity focuses specifically on these three compliance areas: [Combustible Dust Risk Management](#), [Industrial Hygiene and Occupational Safety](#), and [Health Risk Assessment](#).

You can keep up with Trinity Consultants on its [website](#) and [LinkedIn](#).

Keep up with the National Lime Association on [X](#), [LinkedIn](#), [Facebook](#), and [Instagram](#).

We thank Trinity for their team's assistance in developing this feature.